



Containers supplied across the UK from our nationwide depots
All Container Types—All Container Sizes—Any UK Location

Head Office: 01708 558999

enquiries@containers4saleuk.com

Secure Storage Container Hire

Containers4saleuk offer a nationwide hire service for all types and sizes of new, refurbished and used containers. We arrange delivery and offloading to your premises anywhere within the UK. Standard container sizes offered include 8ft, 10ft, 20ft, 30ft, 40ft & 45ft in length by 8ft 6inch in height. We also offer refrigerated containers, flat racks, high cube containers, container tanks, open top containers and many more.



Specification

- Hire containers available for long or short term to suit our customers specific needs.
- New, used and refurbished containers available.
- Food grade industry dedicated containers.
- Retail standard containers.
- Storage containers ideal for self storage.
- Specialised containers bespoke to customers requirements.
- Lock box facilities for maximum security fitted as standard.
- Depots throughout the UK.
- Nationwide deliveries and offloading at your premises.
- Containers dedicated to the building industry.
- Guaranteed rodent proof.
- Corten steel manufacture.
- Insurance approved high security anti-vandal construction.
- High security padlocks designed specifically for our hire containers can be purchased as an optional extra.
- Sleepers can also be provided as optional extras.

We also hire refrigerated containers



Contact Our Sales Team For A Quotation Or Complete Our On-Line Enquiry



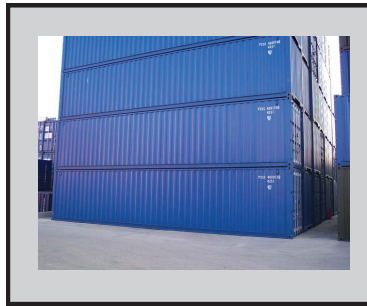
Containers supplied across the UK from our nationwide depots
All Container Types—All Container Sizes—Any UK Location

Head Office: 01708 558999

enquiries@containers4saleuk.com

Delivery Guidelines

Containers4saleuk can deliver and offload any container to any UK destination. Our vehicles are equipped with large cranes and offload to the side of the vehicle. Customers can also arrange their own collection and deliveries if required. Please see below our Delivery Guide ensuring you adhere to our guidelines.



- All deliveries are quoted externally to your premises (i.e. not inside the building).
- Our wagons do not leave hard standing ground (i.e. will not drive onto grass).
- Ensure the location you select is free from drains or fire exits.
- All deliveries are made on a best efforts basis.
- It is the customer's responsibility to ensure the site/delivery location is accessible and suitable for HGV deliveries.
- The customer must ensure a representative is on site to meet the vehicle driver.
- Please ensure that you are satisfied before the driver leaves your premises.
- The driver will require a signature to confirm that the unit is in the correct position, the doors operate correctly, padlocks work (if supplied) and there are no defects with the equipment.
- In certain circumstances if the site conditions are poor we may not be able to deliver your container and may have to abort the delivery at your cost so please ensure we are made aware of every eventuality possible.

Container Dimensions

	External Dimensions		Internal Dimensions		
	Width	Height	Width	Height	Length
8'	7' 1"	7' 5"	6' 11"	6' 8"	7' 6"
10'	8'	8' 6"	7' 7"	7' 9"	9' 2"
20'	8'	8' 6"	7' 7"	7' 9"	19' 3"
30'	8'	8' 6"	7' 7"	7' 9"	29' 4"
40'	8'	8' 6"	7' 7"	7' 9"	39' 4"
40' High Cube	8'	9' 6"	7' 7"	8' 9"	39' 4"
45' High Cube	8'	9' 6"	7' 7"	8' 9"	44' 6"

Contact Our Sales Team For A Quotation Or Complete Our On-Line Enquiry